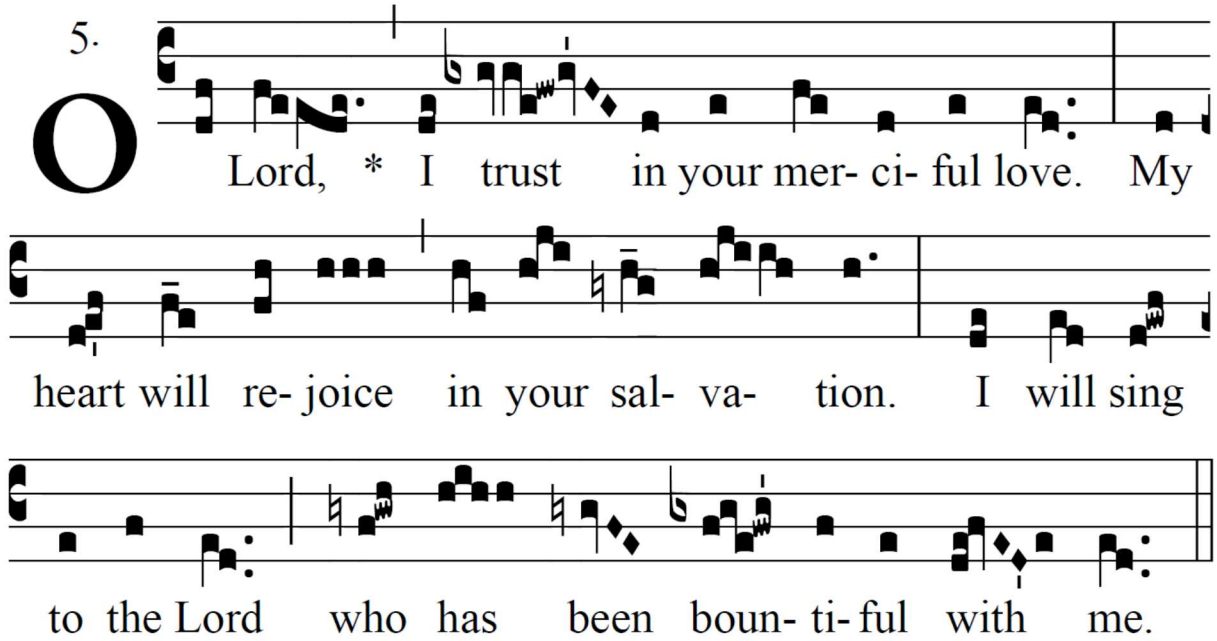


ENTRANCE ANTIPHON *Domine, in tua misericordia speravi.*  
*Ps 12:6*

- i -

5.

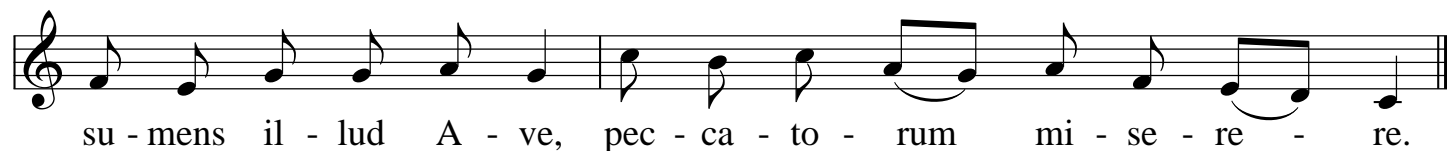
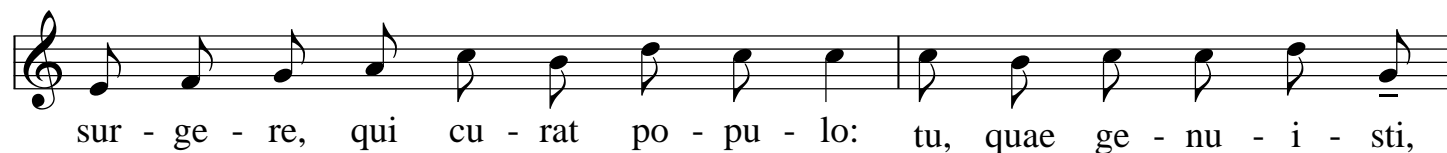
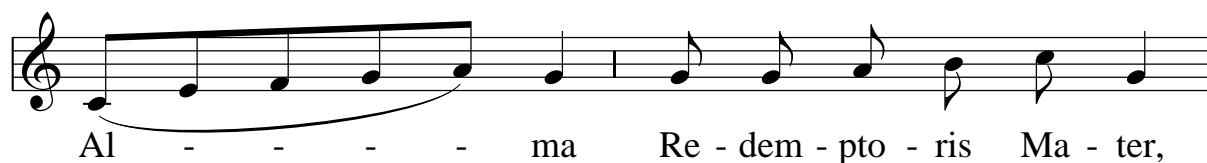


**O** Lord, \* I trust in your mer- ci- ful love. My  
heart will re- joice in your sal- va- tion. I will sing  
to the Lord who has been boun- ti- ful with me.

# ALMA REDEMPTORIS MATER

Gregorian mel.

## *Antiphona in tempore Adventus*



Anthem to the Blessed Virgin Mary

*Alma Redemptóris*

Simple tone

5.  
**A**



Lma \* Redemptó-ris Máter, quæ pérvia cóe-li



pórta mánes, Et stélla má-ris, succúrre cadénti súrge-



re qui cúrat pópu-lo : Tu quæ genu-ísti, natúra mi-rán-



te, tú-um sánctum Geni-tó-rem : Vírgo pri-us ac posté-



ri-us, Gabri-é-lis ab óre súmens illud Ave, peccató-



rum mi-se-ré-re.

# How Shall I Sing That Majesty

Text: John Mason (1646-1694)

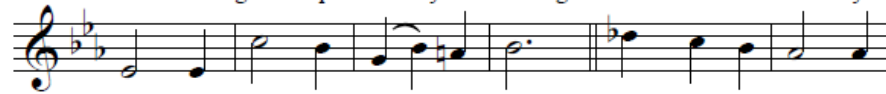
COE FEN Ken Naylor (1931-1981)



1 How shall I sing that ma - jes - ty which an - gels  
2 Thy bright-ness un - to them ap - pears whilst I thy  
3 En - ligh - ten with faith's light my heart, in - flame it  
4 How great a be - ing, Lord, is thine, which doth all



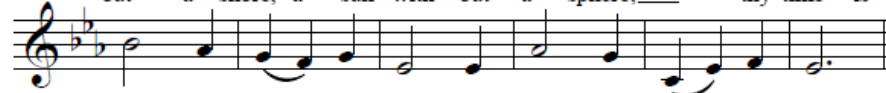
do\_\_\_ ad - mire? Let dust in dust and si - lence  
foot - steps trace; a sound of God comes to my  
with\_\_\_ love's fire; then shall I sing and bear a  
be - ings keep! Thy know - ledge is the on - ly



lie; sing, *sing*, ye heav'n - ly choir! Thou - sands of thou - sands  
ears, but they be - hold thy face. They sing be - cause thou  
part with that ce - les - tial choir. I shall, I fear, be  
line to sound so vast a deep: thou art a sea with -



stand a - round thy throne, O God most high;\_\_\_ ten thou - sand  
art their sun; Lord, send a beam on me;\_\_\_ for whereheav'n  
dark and cold, with all my fire and light;\_\_\_ yet when thou  
out a shore, a sun with - out a sphere;\_\_\_ thy time is



times ten thou - sand sound thy praise, but who am I?  
is but once be - gun, there hal - le - lu - jahs be.  
dost ac - cept their gold, Lord, trea - sure up\_\_\_ my mite.  
now and e - ver - more, thy place is e - v'ry - where.