

AMERICAN FEDERATION PUERI CANTORES

Gospel Acclamation: ALLELUIA (chant, mode VI)

*The CHOIR intones the Alleluia melody (lower line), then choir & assembly repeat the lower line. CANTOR sings the verse, then ALL repeat the Alleluia, with the sopranos singing the upper line (descant) and remainder of the choir and assembly singing the lower line.

Al - le - lu - ia, al - le - lu - ia, al - le - lu - ia.

Al - le - lu - ia, al - le - lu - ia, al - le - lu - ia.

PHOENIX: The Presentation of the Lord (February 1, 2020)

A light of revelation to the Gentiles
And glory for your people Israel.

SOUTH FLORIDA: The 7th Sunday in Ordinary Time-A (February 22, 2020)

Who-ev-er keeps the word of Christ,
the love of God is truly per-fected in him.

6471 • Alleluia in honor of Father Paul Le Jeune • 4th Sunday of Lent, Year A

Organ
Intro

Musical notation for the Organ Intro, consisting of two staves (treble and bass clef) in G major. The melody is primarily in the treble clef, with accompaniment in the bass clef.

Cantor

Praise to you, — Lord Je - sus Christ, king of end - less glo - ry.

Musical notation for the Cantor part of the first line, featuring a vocal line and piano accompaniment.

All
Present

Praise to you, — Lord Je - sus Christ, king of end - less glo - ry.

Musical notation for the All Present part of the first line, featuring a piano accompaniment.

Cantor

I am the light of the world, *says* the Lord;

Musical notation for the Cantor part of the second line, featuring a vocal line and piano accompaniment.

who - ev - er fol - lows me will have *the* light — of life.

Musical notation for the All Present part of the second line, featuring a piano accompaniment.

All
Present

Praise to you, — Lord Je - sus Christ, king of end - less glo - ry.

Musical notation for the All Present part of the third line, featuring a piano accompaniment.

6471 • Alleluia in honor of Father Paul Le Jeune • The Annunciation of the Lord

Organ
Intro

Musical notation for the Organ Intro, consisting of two staves (treble and bass clef) in G major. The melody is simple and rhythmic, with a final chord of G major.

Cantor

Praise to you, — Lord Je - sus Christ, king of end - less glo - ry.

Musical notation for the Cantor's first line, featuring a vocal line and piano accompaniment. The lyrics are: "Praise to you, — Lord Je - sus Christ, king of end - less glo - ry."

All
Present

Praise to you, — Lord Je - sus Christ, king of end - less glo - ry.

Musical notation for All Present's first line, featuring a piano accompaniment. The lyrics are: "Praise to you, — Lord Je - sus Christ, king of end - less glo - ry."

Cantor

The word became
flesh and made his dwelling a - mong us

Musical notation for the Cantor's second line, featuring a vocal line and piano accompaniment. The lyrics are: "The word became flesh and made his dwelling a - mong us"

and we saw his glo - ry.

Musical notation for the second line, featuring a piano accompaniment. The lyrics are: "and we saw his glo - ry."

All
Present

Praise to you, — Lord Je - sus Christ, king of end - less glo - ry.

Musical notation for All Present's second line, featuring a piano accompaniment. The lyrics are: "Praise to you, — Lord Je - sus Christ, king of end - less glo - ry."

6470 • Alleluia in honor of Father Paul Le Jeune • 5th Sunday of Lent, Year A

Organ
Intro

Musical notation for the Organ Intro, consisting of two staves (treble and bass clef) in G major. The melody is a simple, rhythmic sequence of notes: G4, A4, B4, C5, B4, A4, G4, F#4, E4, D4, C4.

Cantor

Praise to you, — Lord Je - sus Christ, king of end - less glo - ry.

Musical notation for the Cantor's first phrase, consisting of two staves. The melody is: G4, A4, B4, C5, B4, A4, G4, F#4, E4, D4, C4. The bass line provides harmonic support with chords and moving lines.

All
Present

Praise to you, — Lord Je - sus Christ, king of end - less glo - ry.

Musical notation for the All Present part of the first phrase, consisting of two staves. The melody is: G4, A4, B4, C5, B4, A4, G4, F#4, E4, D4, C4. The accompaniment is similar to the Cantor part.

Cantor

I am the res - ur - rec - tion and the life, **says** the Lord;

Musical notation for the Cantor's second phrase, consisting of two staves. The melody is: G4, A4, B4, C5, B4, A4, G4, F#4, E4, D4, C4. The bass line is mostly sustained chords.

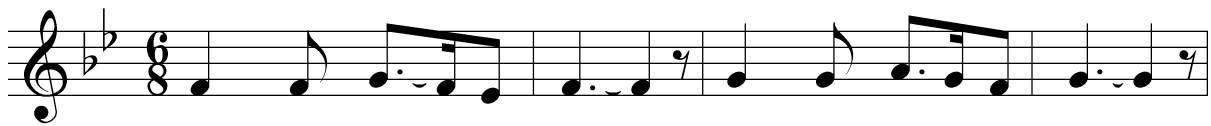
who - ev - er be - lieves in me **will** nev - er die. —

Musical notation for the third phrase, consisting of two staves. The melody is: G4, A4, B4, C5, B4, A4, G4, F#4, E4, D4, C4. The accompaniment is simple and supportive.

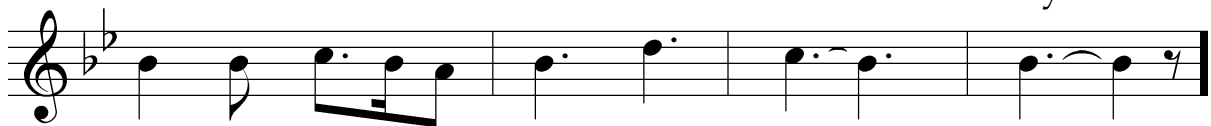
All
Present

Praise to you, — Lord Je - sus Christ, king of end - less glo - ry.

Musical notation for the All Present part of the second phrase, consisting of two staves. The melody is: G4, A4, B4, C5, B4, A4, G4, F#4, E4, D4, C4. The accompaniment is similar to the Cantor part.



Praise and hon-or to You! Praise and honor to you!



Praise and hon-or to You, Lord Je - sus Christ!

Copyright © 1990 GIA Music Publications, Inc.
All Rights Reserved. Used with Permission.